

easyfoam365+ ST-160 wall mount

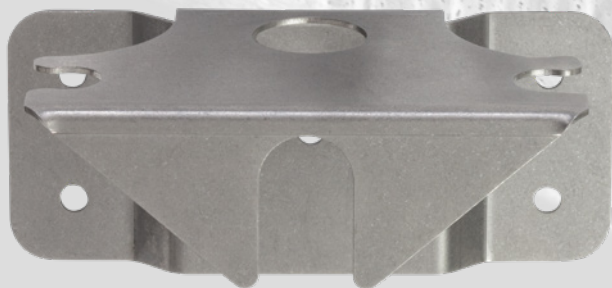


The choice of perfection



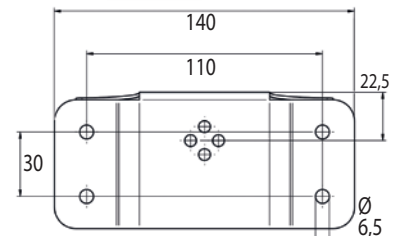
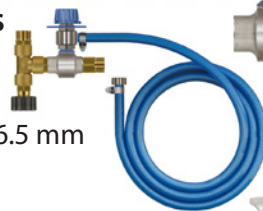
Ideal for all stationary foam and disinfection applications and carwash

Easy and safe wall mounting for ST-160, ST-160 with ST-161 and ST-166

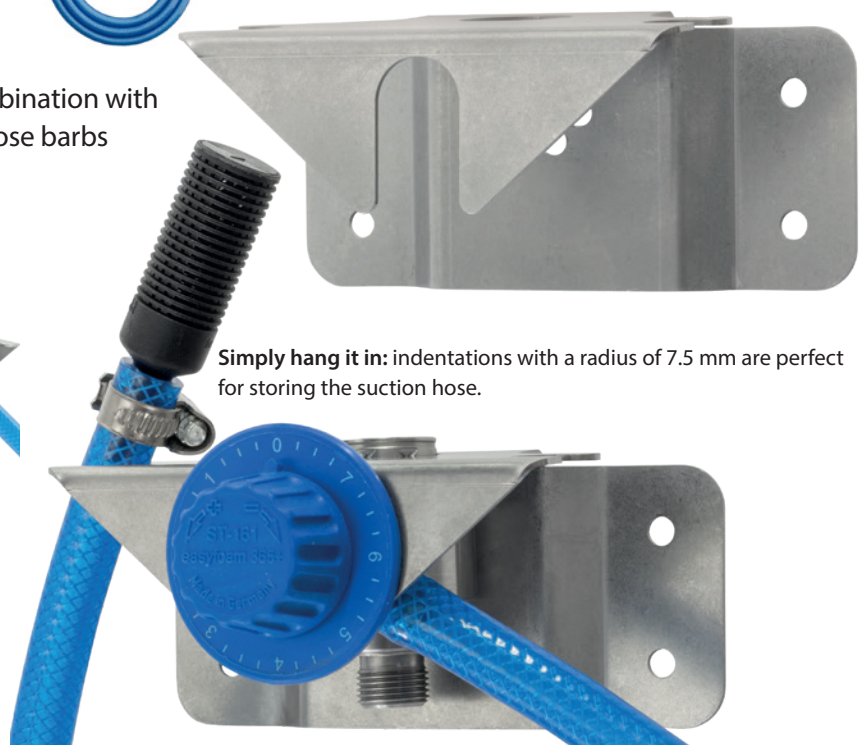


easyfoam365+ wall bracket for the injectors ST-160, ST-160 with metering valve ST-161 and ST-166, as well as easywash365+ foam sets

- Material: stainless steel 1.5 mm
- Easy wall mounting through holes, two 6.5 mm on each side
- Incl. fastening material for the injector.
- Suitable for the injectors ST-160, ST-160 in combination with the metering valve ST-161 and ST-166 with 2 hose barbs
- Dimensions H x W x D: 63.5 x 140 x 71.5 mm



With mounting screws and washers: The injector can be easily attached to the bracket.



Simply hang it in: indentations with a radius of 7.5 mm are perfect for storing the suction hose.

Stainless steel. Incl. fastening material for the injector. Suitable for ST-160 + 161 and 166

R+M Nr.
200 160 160